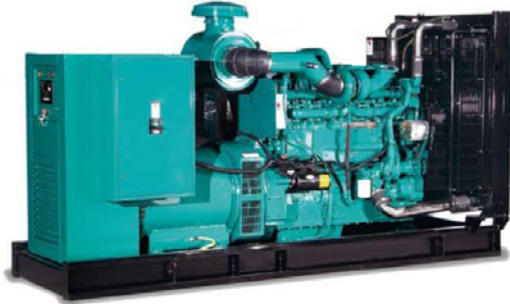


Generator set 70-175 KVA

Thai Generator **STAMFORD** power generation **STAMFORD**
CUMMINS ENGINE



STANDARD OPEN TYPE GENERATOR

As a primary source of power or for standby, from hospitals and office buildings, THAI-GENERATOR offers standard and custom designed models.

Before release from the factory, each generator set passes a comprehensive works test covering all functions.

THAI-GENERATOR and its agents can support you with planning, installation and commissioning, technical advice, maintenance services as well as spare parts in order to ensure that the generator set provides reliable power source that the customer expectation.

Generator Sets 380/220 V. , 400/230 V.- 50 Hz.			Model					
			GSC70	GSC80	GSC110	GSC125	GSC150	GSC175
Power Pf. 0.8	Standby	kVA.	70	80	110	125	150	175
		kW.	56	64	88	100	120	140
	Prime	kVA.	63	72	100	114	135	160
		kW.	50	57.6	80	102.6	108	128

STANDARD SPECIFICATION

ENGINE

- CUMMINS heavy duty diesel engine
- For stroke, water cooled, direct injection fuel system
- Mechanical Governor Type
- Four valves per cylinder
- 12 or 24 V D.C. starter and charge alternator
- Cartridge type dry air filter (Heavy duty 2 - Stage filters)
- Flexible fuel connection hoses and oil drain valve
- Industrial capacity exhaust silencer and expansion joint
- Starter battery (with lead acid)
- Operation manuals and circuit diagrams documents

GENERATOR

STAMFORD

- Screen protected and drip-proof, brushless, self-exciting, 4 poles, class H insulation system, the standard degree of protection is IP 23, single bearing system with automatic voltage regulator

CHASSIS

- The complete generator set is mounted as whole on a heavy-duty fabricated, steel base frame. Antivibration pads are fixed between the engine / generator feet and the base frame
- Base frame design incorporates an integral fuel tank

QUALITY STANDARDS

- The equipment meets the following standards : NEMA. The generator set is manufactured by a full accredited.

WARRANTY

- 12 months warranty from commissioning date as standard

CONTROL SYSTEM

- Control, supervision and protection panels are mounted on the generator set with antivibration pads. The control panel is equipped as follows :

GENERATOR PANELS

- AC Voltmeter with selector switch
- AC Ammeter with selector switch
- Frequency meter
- Hour meter
- Indication lamp
- Circuit breaker
- One set of the instrument fuses.

ENGINE PANELS

- Start / Stop (key)
- Emergency stop button
- Temperature gauge
- Oil pressure gauge
- Fuel level gauge
- Battery gauge
- Pilot lamp
- Automatic shutdown for low oil pressure and high temperature

OPTION

- o TACHO METER (RPM)
- o ELECTRONIC GOVERNOR
- o AUTOMATIC TRANSFER SWITCH (ATS.)
- o CANOPY
- o SOUND PROOF CANOPY
- o TRAILER

TECHNICAL DATA

SET		DIESEL GENERATOR						
		MODEL	GSC70	GSC80	GSC110	GSC125	GSC150	GSC175
Power Pf. 0.8	Standby	kVA.	70	80	110	125	150	175
		kW.	56	64	88	100	120	140
	Prime	kVA.	63	72	100	114	135	160
		kW.	50	57.6	80	102.6	108	128
DIESEL ENGINE		CUMMINS ENGINE MODEL	4BTA3.9-G2	6BT5.9-G2	6BT5.9-G2	6BTA5.9-G2	6BTAA5.9-G2	6CTA8.3-G2
Engine Output- Prime/Standby		hp	79/87	115/125	115/125	142/155	115/125	219/241
Aspiration and Cooling			Alter Cooled, Turbo-charged	Turbo-Charged	Turbo-Charged	Alter Cooled, Turbo-charged	Air-Air Alter Cooled, Turbo-charged	Alter Cooled, Turbo-charged
Displacement		litre	3.9	5.9	5.9	5.9	5.9	8.3
Cylinders-Build			4 - in line	6 - in line	6 - in line	6 - in line	6 - in line	6 - in line
Engine speed		rpm	1500	1500	1500	1500	1500	1500
Bore and Stroke		mmxmm	102 x 120	102 x 120	102 x 120	102 x 120	102 x 120	114 x 135
Compression ratio			17.3 : 1	16.5 : 1	16.5 : 1	16.5 : 1	16.5 : 1	16.5 : 1
Governor Type			Electric	Electric	Electric	Electric	Electric	Electric
Fuel injection system			Direct	Direct	Direct	Direct	Direct	Direct
Fuel consumption at % 100 load		l/hr	14.7	25	25	30	34	45
Engine Lub.oil capacity		litre	16.4	16.4	16.4	16.4	16.4	23.8
ALTERNATOR		STAMFORD Model	UCI224F	UCI224F	UCI274C	UCI274D	UCI274E	UCI274F
Output		Volt	380/220, 400/230					
Voltage regulation		± (%)	1.5	1.5	1.5	1.5	1.5	1.5
Insulation (Starter-Rotor)		Class H	180°C	180°C	180°C	180°C	180°C	180°C
Power Factor		Lagging	0.8	0.8	0.8	0.8	0.8	0.8

Open Types

Dimensions (L x W x H)	mm	2000 x 700 x 1200	2100 x 800 x 1280	2200 x 800 x 1325	2200 x 800 x 1325	2400 x 850 x 1325	2500 x 900 x 1450
Dry weight (App.)	kg	870	1000	1098	1100	1150	1450

Canopy Sound Types

Dimensions (L x W x H)	mm	2600x1100x1580	2750x1100x1600	3000x1100x1600	3200x1150x1800	3450x1150x1800	3700x1250x2000
Dry weight (App.)	kg	1280	1450	520	1650	1950	2500
Sound level (At Full Load) / 1 m	dB	85	85	85	85	85	85

Rating Definitions

Prime Power : All rating are suitable for continuous electrical power (at variable load in lieu of main power network).There is no limitation to the annual hours of operation and all models can supply 10% overload power for 1 hour in 12 hours.

Standby Power : Standby ratings are for the supply of emergency power at variable load in the event of a main power network failure up